

SPECTRO3-MSM-ANA-Scope

Changes due to software update from V3.1 to V3.2

This manual summarises the changes that were made with the software update from **SPECTRO3-MSM-ANA V3.1** to **V3.2**.

!!! A software update from V2.x to V3.2 and vice versa is not possible.

A software update from V3.x to V3.2 can be performed quite easily.

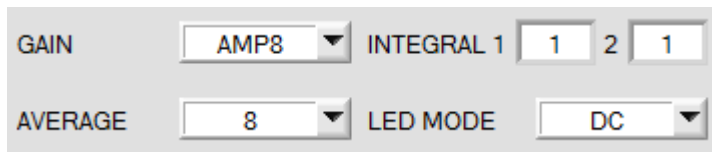
All you need is the FirmwareLoader V1.1 and the firmware files for V3.2.

The FirmwareLoader V1.1 can be found on the software CD/DVD that is provided with the sensor or can be downloaded from our homepage.

The firmware files are available from your sensor supplier.

The respective procedure is exactly described in the "[Manual FirmwareLoader V1_1](#)" file.

Change 1:



The screenshot shows a software interface with four settings: GAIN set to AMP8, AVERAGE set to 8, INTEGRAL 1 set to 1, and LED MODE set to DC. The INTEGRAL 1 field has a small '2' next to it, indicating a new option.

Parameter **INTEGRAL 2** has been added.

INTEGRAL 1:

This function field is used to set the number of scan values (measurement values) over which the raw signal measured at the receiver is summed up. This integral function allows the reliable detection even of extremely weak signals. A higher **INTEGRAL 1** value increases the noise of the raw signals of the receiver unit, and simultaneously decreases the maximum achievable switching frequency of the sensor.

INTEGRAL 1 only is available with **CALIB=OFF** or **XYZ OFFSET**.

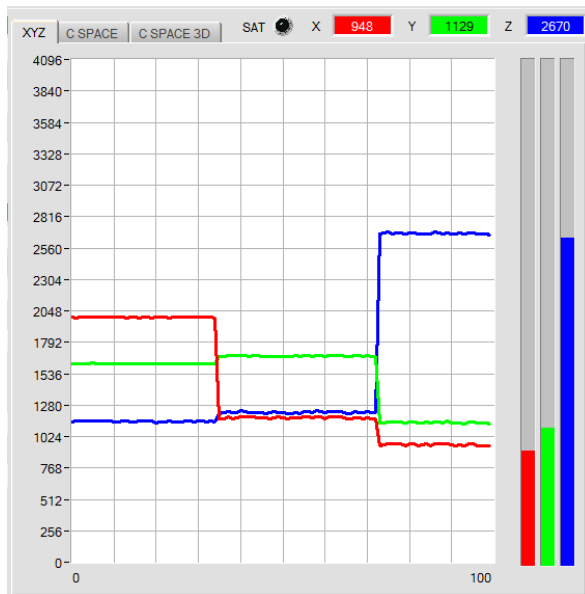
INTEGRAL 2:

This function field is used to set the number of scan values (measurement values) over which the raw signal measured **and averaged** at the receiver is summed up. This integral function allows the reliable detection even of extremely weak signals. A higher **INTEGRAL 2** preset value increases the noise of the raw signals of the receiver unit, and simultaneously decreases the maximum achievable switching frequency of the sensor.

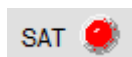
INTEGRAL 2 only is available with **CALIB=OFF** or **XYZ OFFSET**.

In addition, **AVERAGE** must be higher than 1, so that a summation is possible at all.

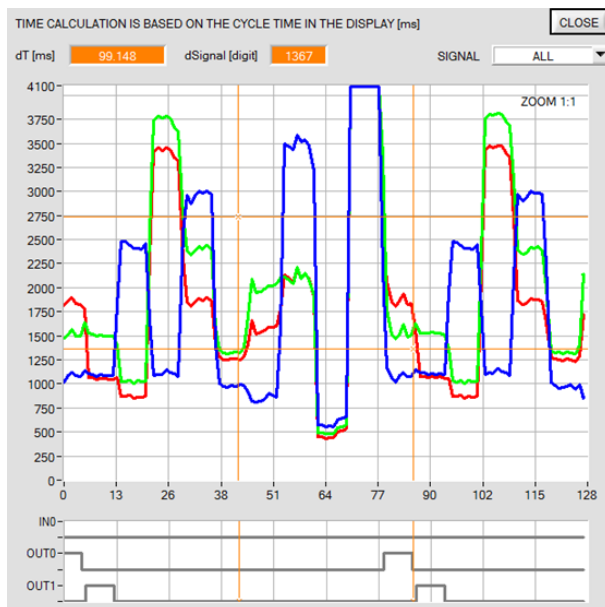
Change 2:



The newly added LED **SAT** indicates if one of the channels is in saturation. In this case, it lights up red.

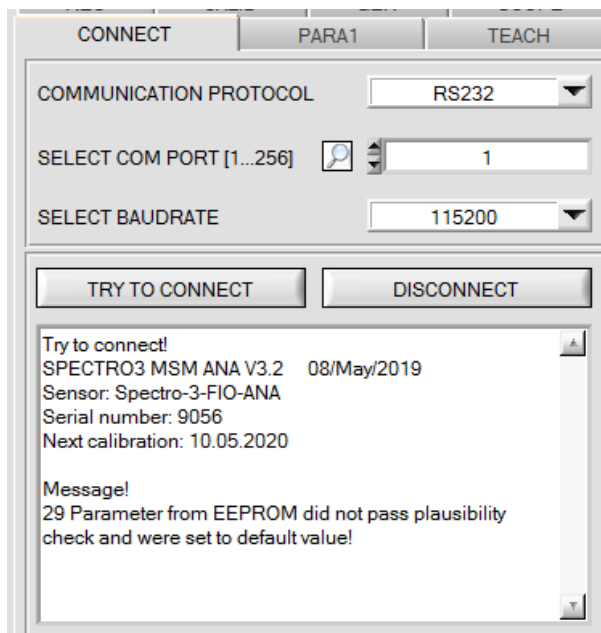


Change 3:



In the SCOPE window, the status of the IN0 input is now also displayed graphically.

Change 4:



In the status window of the CONNECT tab, **Next calibration** indicates when the sensor has to be sent in for calibration.